



AirlCU Inhalation system

for ventilation and spontaneous breathing





What is the AirICU?

The AirICU nebulizer is a medical mesh nebulizer that can be used in combination with a ventilator for the nebulization of aerosols.

AirICU has two nebulization modes: induction mode (trigger mode) and continuous mode. Induction nebulization mode can only be used in conjunction with a ventilator that can provide aerosol inspiratory therapy to patients who cannot breathe on their own to meet the nebulization needs of different patients.

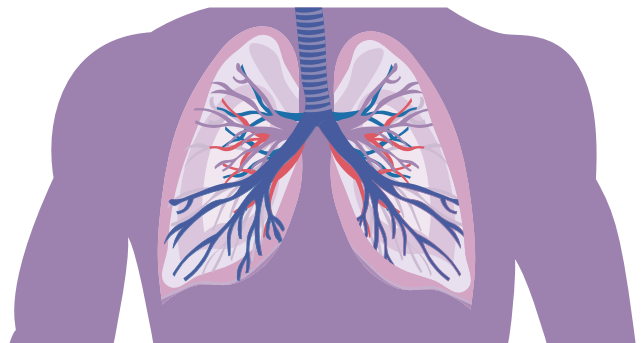


Various T-piece for adults, paediatrics, neonates are also available!

- T-piece aerosol tube with international standard
- Can be connected to mask/mouth-piece or breathing tube

Place of deposition:

Reaches bronchi and alveoli

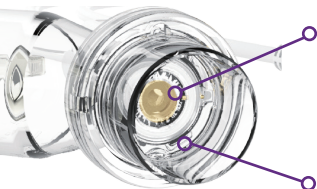


AirCU Inhalation system

Medication cup

Authoritative test report on the proportion of particle size:

The average particle size in this nebulizer is measured with 0.9% physiological saline solution at a temperature of 25.3°C and a humidity of 60%+5% RH. The equivalent particle size distribution curve of the mist particles measured under these conditions is as follows:

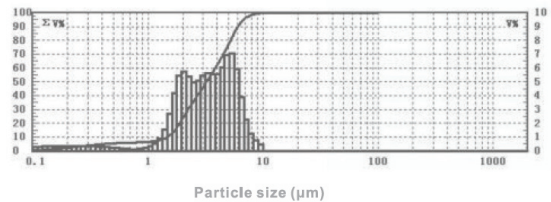


Polymer diaphragm

Corrosion and high temperature resistance.
Generates 1 - 5 μm aerosol particles

Air flow sensor

detects the air flow of the fan and then atomizes



Note: The horizontal axis is the value of the particle size. The left vertical axis is the cumulative percentage of the volume. The right vertical axis is the volume percentage of a particular section.



Two nebulization modes:

Continuous mode and nebulization mode with induction (trigger mode). Free switching between continuous mode and nebulization mode with induction enables aerosol inspiratory therapy during oxygen inhalation.

In conjunction with the ICU ventilator, patients can perform aerosol inspiratory therapy while inhaling oxygen.

AirICU Accessories



Main Unit



Control Module



Mask Elbow+Vented Elbow



Aerotank Kits



Nebulizer Mask



Nebulizer Mask



Medication Cup (With the rubber plug, Type of thread)



Medication Cup (With the rubber plug)



Continuous Nebulization Tube Set



Medical Power Supply



USB Cable (Linear type+Y-type)



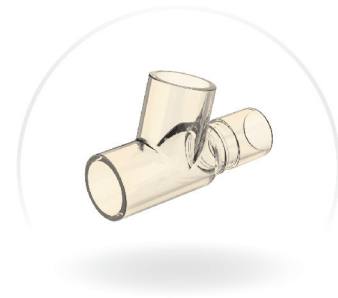
Support Frame Component



Neonate T-Piece (Heat Resistance)



Pediatric T-Piece (Heat Resistance)



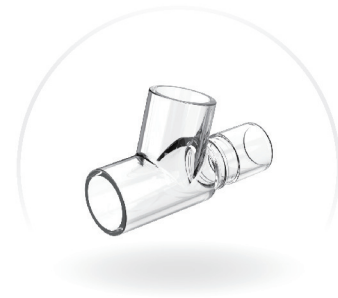
Adult T-Piece (Heat Resistance)



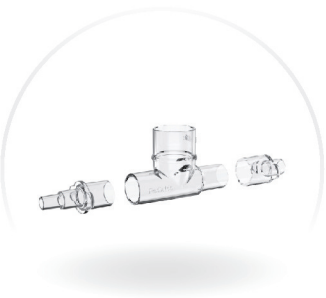
Neonate T-Piece



Pediatric T-Piece



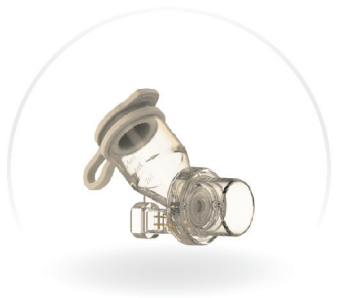
Adult T-Piece



Neonatal Adapter



Medication Cup (With the rubber plug, Type of thread)(Heat Resistance)



Medication Cup (With the rubber plug)(Heat Resistance)



ITEMS	REFERENCE
Main unit	
Support Frame Component	ICU SFC1
Air Flow Sensor	ICU AS1
Medication Cup (With the rubber plug)	ICU MC10
USB Cable (Y-type)	ICU YT1
Adult T-Piece (With the rubber plug)	ICU TP1
Pediatric T-Piece	ICU TP2
Neonate T-Piece	ICU TP3
Medical Power Supply	SINGOF-15E-050250



Connect



Like us



Play video

Room 1903, Building A, No.9 Furong Road, Tantou Community, Songgang Subdistrict,

Bao'an District, Shenzhen 518104, Guangdong China

Version: LFS-CATA-230605